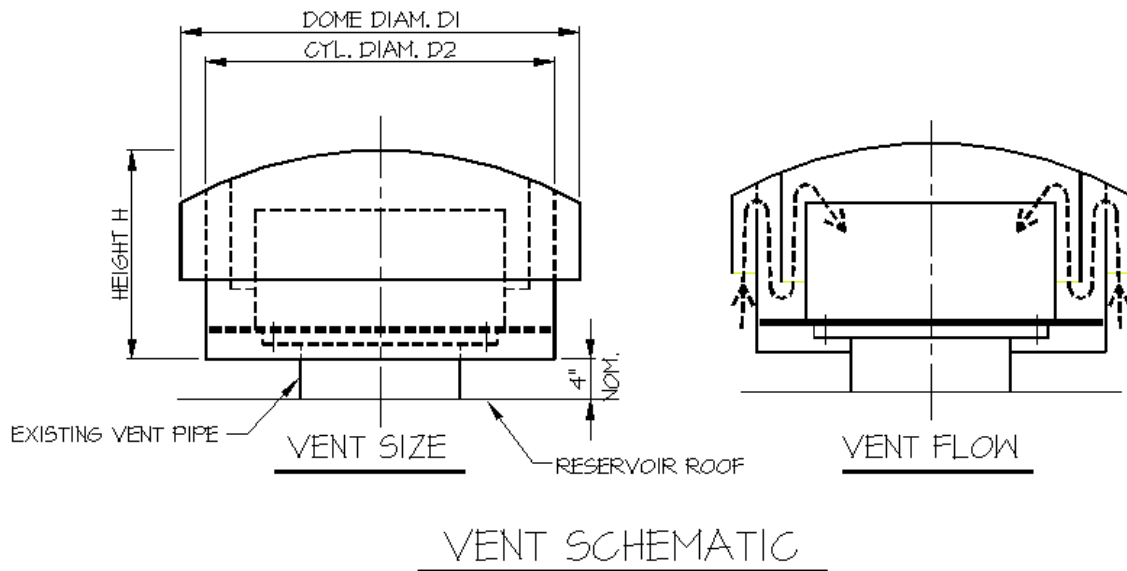


# OMEGA

## VENT SECURITY SHROUD™

PROTECTIVE, ALL-STEEL CONSTRUCTION, EASY TO INSTALL

US PATENT No. 6805627



### DIMENSIONS, WEIGHTS, AND AIR FLOW

Size	Existing Vent Pipe Diameter (inch)	D1 Dome (inch)	D2 Outer Cylinder (inch)	H Height (inch)	Total Weight Two Pieces (lbs)	Weight of Heaviest Piece (lbs)	Air Flow* (cfs gpm)
Small	6 to 8	19	17	18	58	46	12.4 5,570
Medium	10 to 16	34	30	22	156	110	33.6 15,100
Large	18 to 24	50	43	26	372	242	61.5 27,600
X-Large	30 to 36	74	64	32	733	493	143 64,200

\* Air flow into vent at interior static pressure of 1.4 inches of water. Pressure/flow curves available.

# OMEGA

---

## VENT SECURITY SHROUD™

### SPECIFICATIONS

- ▣ Constructed of heavy-gauge carbon or 304 stainless steel
- ▣ Custom powder-coated paint, unless otherwise specified.
- ▣ Removable stainless-steel screens, 16X16 mesh unless otherwise specified.
- ▣ Clog-resistant air intake (frost, debris) available upon request.
- ▣ Easy installation. Simple bolted connection. No welding.
- ▣ Base plate attaches to either straight pipe or pipe flange as specified for ASME/ANSI B16.1 Class 125 Steel Pipe. For installation to flanged vent pipe, vent pipe must extend at least 4 inches above ground surface or top of tank. For installation to unflanged vent pipe, vent pipe must extend at least 8 inches above ground surface or top of tank.
- ▣ Each unit includes necessary bolts. Required padlock not included.
- ▣ **Concept and design are protected by US Patent No. 6805627 with U.S. Patent Office.**